

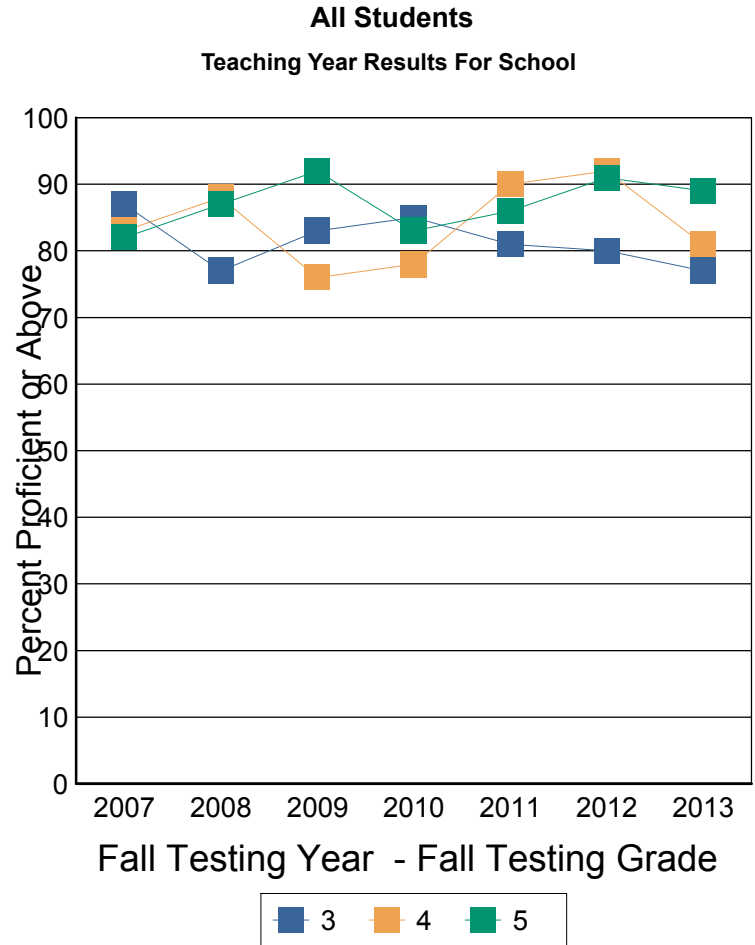
NECAP Percent Proficient or above by Disaggregation and Grade level

Math Teaching Year Report for School

Mast Way School-22805-Oyster River Coop

Fall NECAP results for students who attended this School during the academic year prior to the year reported. Grade is fall testing grade. Year is fall testing year. Line 1: Percent Proficient or above, Line 2: Avg Scaled Score, Line 3: Number Tested

		2007	2008	2009	2010	2011	2012	2013
3	School	87% 351 82	77% 347 63	83% 349 61	85% 350 65	81% 349 84	80% 349 58	77% 347 74
	District	87% 351 154	78% 347 147	84% 349 131	88% 350 147	85% 351 154	88% 351 139	81% 347 142
	State	73% 345 14,451	72% 345 14,292	76% 347 14,077	76% 347 13,995	76% 347 13,718	74% 346 13,712	70% 345 13,418
4	School	83% 449 66	88% 451 77	76% 448 66	78% 450 68	90% 455 63	92% 452 82	81% 451 57
	District	83% 449 125	88% 450 149	81% 448 154	84% 451 137	92% 454 155	93% 453 153	84% 451 140
	State	68% 445 14,871	73% 446 14,444	75% 447 14,380	74% 447 14,059	76% 448 14,020	77% 448 13,726	73% 447 13,800
5	School	82% 548 79	87% 549 63	92% 550 75	83% 550 64	86% 551 66	91% 550 65	89% 550 78
	District	80% 547 154	85% 549 125	89% 549 150	84% 549 149	89% 551 133	86% 549 159	89% 550 151
	State	69% 545 15,035	73% 546 14,856	75% 546 14,542	73% 546 14,410	76% 547 14,054	74% 547 14,073	73% 546 13,783



These results are for the students who were instructed in the previous teaching year grade. For example: Fall Testing grade 5 is reporting the performance of teaching year grade 4.

Note: This report includes NECAP data only. Students who did not take the test for any reason are NOT included. The denominator for percent proficient is number of students tested by NECAP (which is not a true representation of the student population). A student's assignment to a school or district in this report is not contingent on continuous enrollment (as it is in AYP reporting). If less than 10 students are tested then results are not reported. Ethnic group designations have changed over time. Please see website for more information. Data source for report: Disaggregated results teaching year.

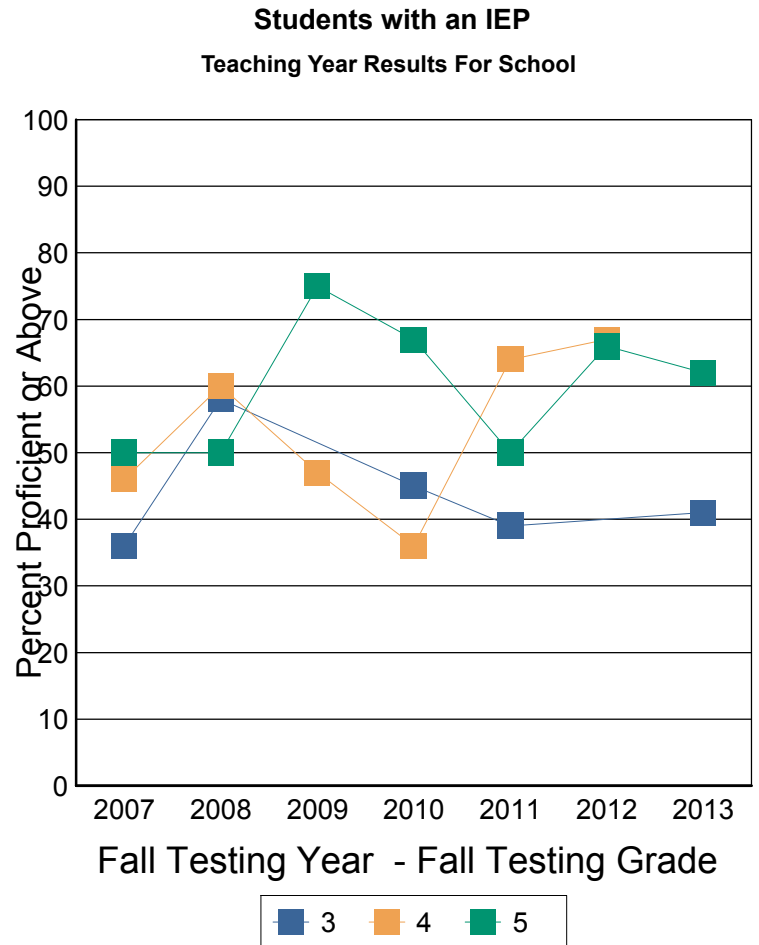
NECAP Percent Proficient or above by Disaggregation and Grade level

Math Teaching Year Report for School

Mast Way School-22805-Oyster River Coop

Fall NECAP results for students who attended this School during the academic year prior to the year reported. Grade is fall testing grade. Year is fall testing year. Line 1: Percent Proficient or above, Line 2: Avg Scaled Score, Line 3: Number Tested

		2007	2008	2009	2010	2011	2012	2013
3	School	36% 339 11	58% 340 12	3 3	45% 341 11	39% 331 13	7 7	41% 341 12
	District	60% 343 25	57% 341 23	9 9	60% 342 28	50% 337 20	50% 342 20	44% 339 23
	State	43% 337 1,867	40% 336 1,737	44% 338 1,775	45% 338 1,652	45% 338 1,649	43% 337 1,711	36% 336 1,753
4	School	46% 437 13	60% 444 10	47% 438 15	36% 439 11	64% 447 14	67% 442 15	7 7
	District	58% 440 26	52% 442 23	59% 440 32	44% 440 18	65% 444 34	70% 443 23	52% 442 21
	State	34% 435 2,142	39% 436 2,034	40% 436 2,046	41% 437 1,930	42% 437 1,919	43% 437 1,851	35% 435 1,872
5	School	50% 536 12	50% 538 12	75% 544 12	67% 544 18	50% 539 12	66% 542 15	62% 541 13
	District	41% 538 27	48% 538 23	68% 543 25	69% 543 32	50% 539 18	60% 541 35	52% 540 21
	State	34% 535 2,399	37% 536 2,237	39% 536 2,196	36% 536 2,156	39% 536 2,082	35% 536 2,067	38% 536 1,968



These results are for the students who were instructed in the previous teaching year grade. For example: Fall Testing grade 5 is reporting the performance of teaching year grade 4.

Note: This report includes NECAP data only. Students who did not take the test for any reason are NOT included. The denominator for percent proficient is number of students tested by NECAP (which is not a true representation of the student population). A student's assignment to a school or district in this report is not contingent on continuous enrollment (as it is in AYP reporting). If less than 10 students are tested then results are not reported. Ethnic group designations have changed over time. Please see website for more information. Data source for report: Disaggregated results teaching year.

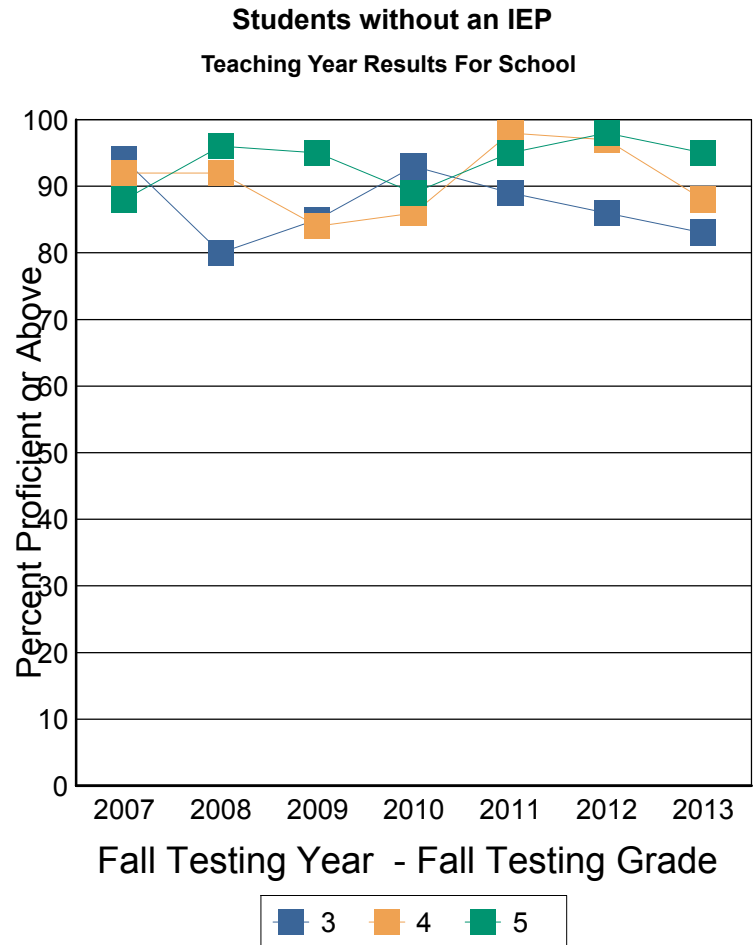
NECAP Percent Proficient or above by Disaggregation and Grade level

Math Teaching Year Report for School

Mast Way School-22805-Oyster River Coop

Fall NECAP results for students who attended this School during the academic year prior to the year reported. Grade is fall testing grade. Year is fall testing year. Line 1: Percent Proficient or above, Line 2: Avg Scaled Score, Line 3: Number Tested

		2007	2008	2009	2010	2011	2012	2013
3	School	94% 353 71	80% 349 51	85% 349 58	93% 352 54	89% 353 71	86% 351 51	83% 348 62
	District	92% 352 129	82% 349 124	87% 350 122	94% 352 119	90% 353 134	93% 352 119	88% 349 119
	State	77% 347 12,584	76% 347 12,555	81% 348 12,302	80% 348 12,343	80% 349 12,069	79% 348 12,001	75% 347 11,665
4	School	92% 452 53	92% 453 67	84% 451 51	86% 452 57	98% 458 49	97% 454 67	88% 453 50
	District	90% 451 99	94% 452 126	87% 450 122	90% 452 119	99% 457 121	97% 455 130	90% 453 119
	State	73% 446 12,729	79% 448 12,410	79% 448 12,334	80% 449 12,129	82% 450 12,101	82% 450 11,875	78% 449 11,928
5	School	88% 550 67	96% 552 51	95% 551 63	89% 553 46	95% 553 54	98% 552 50	95% 551 65
	District	88% 549 127	93% 551 102	94% 550 125	88% 551 117	95% 553 115	92% 551 124	96% 552 130
	State	75% 546 12,636	79% 547 12,619	81% 548 12,346	79% 548 12,254	82% 549 11,972	80% 548 12,006	79% 548 11,815



These results are for the students who were instructed in the previous teaching year grade. For example: Fall Testing grade 5 is reporting the performance of teaching year grade 4.

Note: This report includes NECAP data only. Students who did not take the test for any reason are NOT included. The denominator for percent proficient is number of students tested by NECAP (which is not a true representation of the student population). A student's assignment to a school or district in this report is not contingent on continuous enrollment (as it is in AYP reporting). If less than 10 students are tested then results are not reported. Ethnic group designations have changed over time. Please see website for more information. Data source for report: Disaggregated results teaching year.

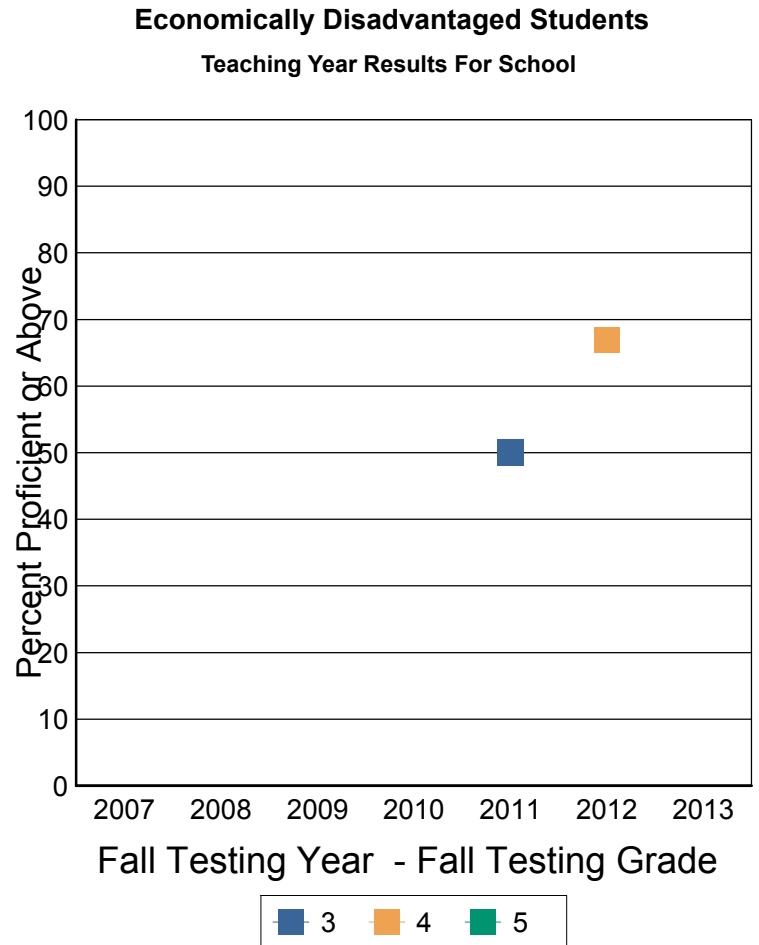
NECAP Percent Proficient or above by Disaggregation and Grade level

Math Teaching Year Report for School

Mast Way School-22805-Oyster River Coop

Fall NECAP results for students who attended this School during the academic year prior to the year reported. Grade is fall testing grade. Year is fall testing year. Line 1: Percent Proficient or above, Line 2: Avg Scaled Score, Line 3: Number Tested

		2007	2008	2009	2010	2011	2012	2013
3	School	5	5	2	6	50% 344 12	4	9
	District	6	70% 343 10	4	73% 346 11	54% 346 13	8	40% 336 15
	State	56% 340 3,044	54% 340 3,126	62% 343 3,216	61% 342 3,574	61% 343 3,603	58% 342 3,795	53% 340 3,890
4	School	2	5	8	6	6	67% 442 12	4
	District	2	80% 445 10	53% 440 15	7	82% 448 11	67% 442 12	9
	State	47% 439 3,140	57% 441 3,150	59% 442 3,306	61% 443 3,677	61% 442 3,776	61% 442 3,741	55% 441 3,872
5	School	4	3	4	8	5	6	8
	District	6	4	80% 543 10	71% 546 14	6	67% 544 12	9
	State	49% 539 3,010	55% 540 3,178	58% 541 3,281	57% 541 3,714	62% 542 3,751	57% 542 3,873	56% 541 3,737



These results are for the students who were instructed in the previous teaching year grade. For example: Fall Testing grade 5 is reporting the performance of teaching year grade 4.

Note: This report includes NECAP data only. Students who did not take the test for any reason are NOT included. The denominator for percent proficient is number of students tested by NECAP (which is not a true representation of the student population). A student's assignment to a school or district in this report is not contingent on continuous enrollment (as it is in AYP reporting). If less than 10 students are tested then results are not reported. Ethnic group designations have changed over time. Please see website for more information. Data source for report: Disaggregated results teaching year.

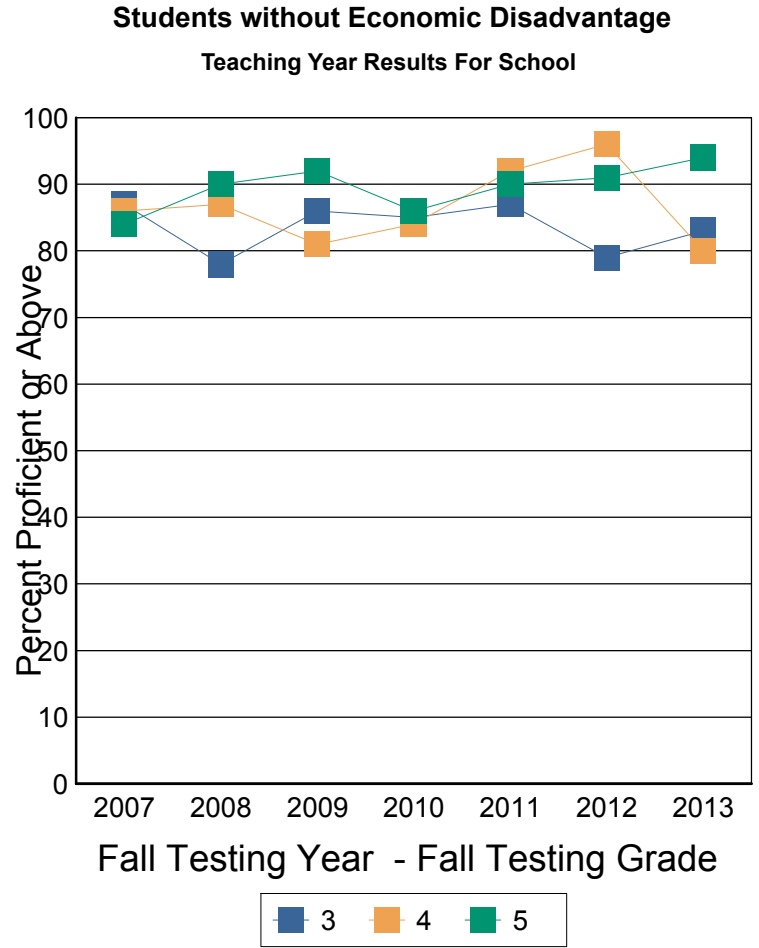
NECAP Percent Proficient or above by Disaggregation and Grade level

Math Teaching Year Report for School

Mast Way School-22805-Oyster River Coop

Fall NECAP results for students who attended this School during the academic year prior to the year reported. Grade is fall testing grade. Year is fall testing year. Line 1: Percent Proficient or above, Line 2: Avg Scaled Score, Line 3: Number Tested

		2007	2008	2009	2010	2011	2012	2013
3	School	87% 352 77	78% 348 58	86% 350 59	85% 350 59	87% 350 72	79% 348 54	83% 348 65
	District	87% 351 148	79% 348 137	86% 350 127	89% 351 136	88% 352 141	88% 351 131	85% 348 127
	State	77% 347 11,407	76% 347 11,166	81% 348 10,861	81% 349 10,421	82% 349 10,115	80% 348 9,917	77% 347 9,528
4	School	86% 450 64	87% 452 72	81% 449 58	84% 451 62	92% 456 57	96% 454 70	80% 451 53
	District	84% 449 123	88% 451 139	84% 449 139	87% 452 130	92% 454 144	95% 454 141	84% 451 131
	State	73% 446 11,731	78% 448 11,294	79% 448 11,074	79% 449 10,382	82% 450 10,244	83% 450 9,985	80% 449 9,928
5	School	84% 548 75	90% 550 60	92% 550 71	86% 551 56	90% 552 61	91% 550 59	94% 551 70
	District	82% 547 148	86% 549 121	90% 549 140	86% 549 135	91% 551 127	87% 549 147	92% 551 142
	State	73% 546 12,025	78% 547 11,678	80% 548 11,261	78% 548 10,696	81% 548 10,303	81% 548 10,200	80% 548 10,046



These results are for the students who were instructed in the previous teaching year grade. For example: Fall Testing grade 5 is reporting the performance of teaching year grade 4.

Note: This report includes NECAP data only. Students who did not take the test for any reason are NOT included. The denominator for percent proficient is number of students tested by NECAP (which is not a true representation of the student population). A student's assignment to a school or district in this report is not contingent on continuous enrollment (as it is in AYP reporting). If less than 10 students are tested then results are not reported. Ethnic group designations have changed over time. Please see website for more information. Data source for report: Disaggregated results teaching year.

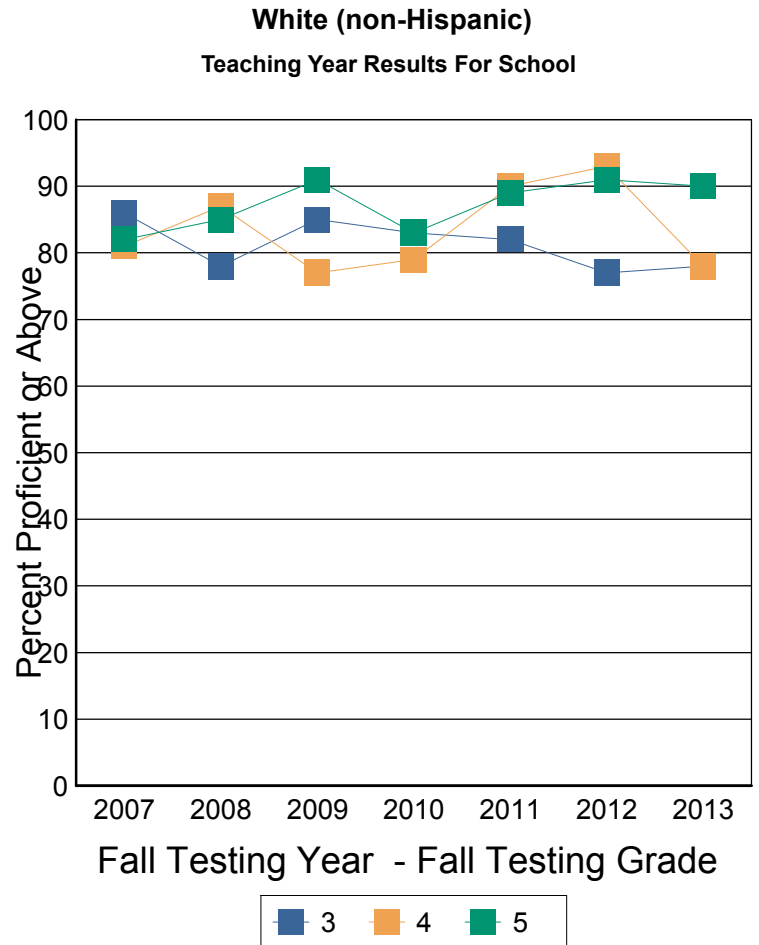
NECAP Percent Proficient or above by Disaggregation and Grade level

Math Teaching Year Report for School

Mast Way School-22805-Oyster River Coop

Fall NECAP results for students who attended this School during the academic year prior to the year reported. Grade is fall testing grade. Year is fall testing year. Line 1: Percent Proficient or above, Line 2: Avg Scaled Score, Line 3: Number Tested

		2007	2008	2009	2010	2011	2012	2013
3	School	86% 351 75	78% 348 59	85% 349 53	83% 350 60	82% 350 78	77% 348 48	78% 347 69
	District	87% 351 144	78% 347 136	86% 349 117	89% 351 132	86% 352 140	87% 350 118	80% 347 131
	State	74% 346 13,215	73% 346 12,960	78% 347 12,671	77% 348 12,431	78% 348 12,096	76% 347 12,003	72% 346 11,559
4	School	81% 448 56	87% 451 70	77% 448 62	79% 450 62	90% 455 59	93% 453 77	78% 450 46
	District	82% 449 109	88% 450 139	82% 448 144	85% 451 126	92% 454 139	94% 454 140	83% 450 120
	State	69% 445 13,462	75% 446 13,155	75% 447 12,999	75% 447 12,575	78% 448 12,394	79% 448 12,072	75% 447 12,046
5	School	82% 547 74	85% 549 55	91% 550 69	83% 551 60	89% 551 60	91% 550 62	90% 550 73
	District	80% 547 143	86% 549 112	89% 549 141	85% 549 139	89% 551 123	85% 549 145	90% 551 139
	State	69% 545 13,740	74% 546 13,538	75% 547 13,157	75% 547 12,940	77% 547 12,542	75% 547 12,422	74% 546 12,118



These results are for the students who were instructed in the previous teaching year grade. For example: Fall Testing grade 5 is reporting the performance of teaching year grade 4.

Note: This report includes NECAP data only. Students who did not take the test for any reason are NOT included. The denominator for percent proficient is number of students tested by NECAP (which is not a true representation of the student population). A student's assignment to a school or district in this report is not contingent on continuous enrollment (as it is in AYP reporting). If less than 10 students are tested then results are not reported. Ethnic group designations have changed over time. Please see website for more information. Data source for report: Disaggregated results teaching year.

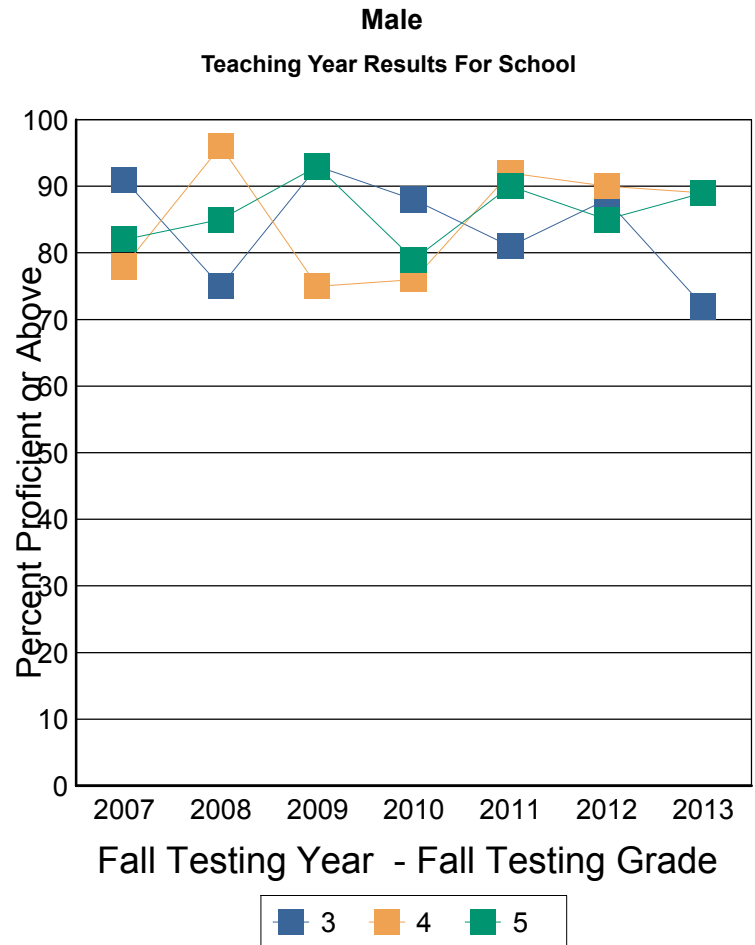
NECAP Percent Proficient or above by Disaggregation and Grade level

Math Teaching Year Report for School

Mast Way School-22805-Oyster River Coop

Fall NECAP results for students who attended this School during the academic year prior to the year reported. Grade is fall testing grade. Year is fall testing year. Line 1: Percent Proficient or above, Line 2: Avg Scaled Score, Line 3: Number Tested

		2007	2008	2009	2010	2011	2012	2013
3	School	91% 352 45	75% 347 39	93% 350 29	88% 351 26	81% 350 42	88% 352 24	72% 346 43
	District	89% 351 81	75% 346 84	90% 350 60	91% 351 70	87% 352 76	90% 351 59	79% 346 73
	State	74% 346 7,495	73% 346 7,549	76% 347 7,238	77% 347 7,209	78% 347 7,094	75% 347 6,905	71% 346 6,914
4	School	78% 448 41	96% 453 43	75% 447 39	76% 451 34	92% 457 26	90% 452 42	89% 455 26
	District	82% 449 74	93% 452 77	79% 447 87	81% 452 66	92% 454 76	93% 455 76	84% 452 62
	State	69% 445 7,661	74% 446 7,484	74% 447 7,597	74% 447 7,219	77% 448 7,224	77% 448 7,099	72% 447 6,935
5	School	82% 547 44	85% 548 38	93% 552 42	79% 549 39	90% 552 33	85% 551 27	89% 551 38
	District	81% 547 77	87% 549 73	90% 550 77	82% 548 85	89% 551 64	81% 549 75	90% 551 74
	State	70% 545 7,736	73% 546 7,666	74% 546 7,538	73% 546 7,614	75% 547 7,191	74% 546 7,227	73% 546 7,141



These results are for the students who were instructed in the previous teaching year grade. For example: Fall Testing grade 5 is reporting the performance of teaching year grade 4.

Note: This report includes NECAP data only. Students who did not take the test for any reason are NOT included. The denominator for percent proficient is number of students tested by NECAP (which is not a true representation of the student population). A student's assignment to a school or district in this report is not contingent on continuous enrollment (as it is in AYP reporting). If less than 10 students are tested then results are not reported. Ethnic group designations have changed over time. Please see website for more information. Data source for report: Disaggregated results teaching year.

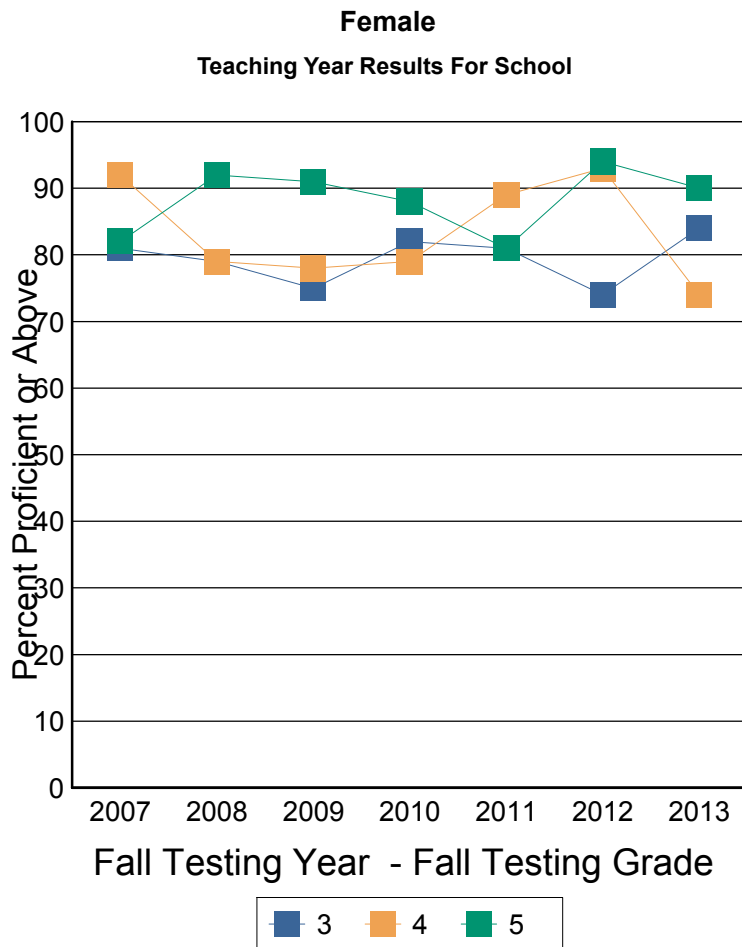
NECAP Percent Proficient or above by Disaggregation and Grade level

Math Teaching Year Report for School

Mast Way School-22805-Oyster River Coop

Fall NECAP results for students who attended this School during the academic year prior to the year reported. Grade is fall testing grade. Year is fall testing year. Line 1: Percent Proficient or above, Line 2: Avg Scaled Score, Line 3: Number Tested

		2007	2008	2009	2010	2011	2012	2013
3	School	81% 350 37	79% 348 24	75% 347 32	82% 349 39	81% 348 42	74% 346 34	84% 348 31
	District	85% 350 73	82% 349 63	79% 348 71	84% 349 77	84% 351 78	85% 350 80	83% 348 69
	State	72% 345 6,956	71% 345 6,742	77% 347 6,839	76% 347 6,786	75% 347 6,624	72% 346 6,807	69% 345 6,504
4	School	92% 451 25	79% 449 34	78% 449 27	79% 449 34	89% 454 37	93% 452 40	74% 448 31
	District	85% 449 51	83% 449 72	84% 449 67	86% 450 71	92% 454 79	92% 452 77	84% 451 78
	State	66% 444 7,210	73% 446 6,960	74% 447 6,783	74% 447 6,840	77% 448 6,796	77% 448 6,627	73% 447 6,865
5	School	82% 548 35	92% 551 25	91% 548 33	88% 553 25	81% 550 33	94% 549 38	90% 548 40
	District	78% 546 77	83% 548 52	89% 548 73	88% 551 64	88% 551 69	90% 549 84	88% 549 77
	State	67% 544 7,299	73% 545 7,190	75% 546 7,004	72% 546 6,796	76% 547 6,863	75% 547 6,845	74% 546 6,642



These results are for the students who were instructed in the previous teaching year grade. For example: Fall Testing grade 5 is reporting the performance of teaching year grade 4.

Note: This report includes NECAP data only. Students who did not take the test for any reason are NOT included. The denominator for percent proficient is number of students tested by NECAP (which is not a true representation of the student population). A student's assignment to a school or district in this report is not contingent on continuous enrollment (as it is in AYP reporting). If less than 10 students are tested then results are not reported. Ethnic group designations have changed over time. Please see website for more information. Data source for report: Disaggregated results teaching year.

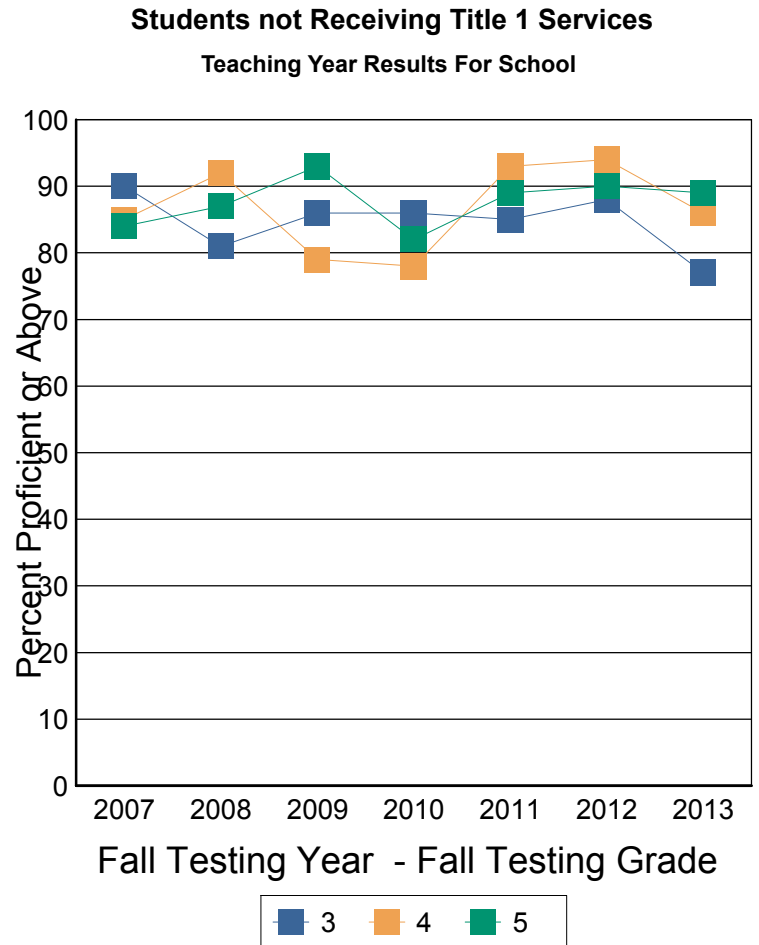
NECAP Percent Proficient or above by Disaggregation and Grade level

Math Teaching Year Report for School

Mast Way School-22805-Oyster River Coop

Fall NECAP results for students who attended this School during the academic year prior to the year reported. Grade is fall testing grade. Year is fall testing year. Line 1: Percent Proficient or above, Line 2: Avg Scaled Score, Line 3: Number Tested

		2007	2008	2009	2010	2011	2012	2013
3	School	90% 352 76	81% 349 58	86% 349 58	86% 351 58	85% 350 78	88% 351 51	77% 347 71
	District	89% 351 148	80% 348 142	85% 349 127	89% 351 140	87% 352 148	91% 352 132	80% 347 139
	State	76% 346 12,349	74% 346 12,241	80% 348 11,963	80% 348 11,548	80% 348 11,153	78% 348 10,798	76% 347 10,387
4	School	85% 450 60	92% 452 70	79% 448 63	78% 450 65	93% 456 59	94% 453 75	86% 453 51
	District	84% 449 119	89% 451 142	84% 449 145	85% 451 127	94% 455 145	94% 454 146	87% 452 134
	State	71% 446 12,773	77% 447 12,446	78% 448 12,302	77% 448 11,699	80% 449 11,464	81% 449 10,994	77% 448 10,931
5	School	84% 548 75	87% 550 60	93% 550 73	82% 551 62	89% 552 60	90% 550 64	89% 550 74
	District	80% 547 150	84% 549 122	91% 549 145	85% 549 140	90% 552 123	85% 549 158	89% 550 147
	State	71% 545 13,310	75% 546 13,028	77% 547 12,670	76% 547 12,040	80% 548 11,470	78% 548 11,325	78% 547 11,096



These results are for the students who were instructed in the previous teaching year grade. For example: Fall Testing grade 5 is reporting the performance of teaching year grade 4.

Note: This report includes NECAP data only. Students who did not take the test for any reason are NOT included. The denominator for percent proficient is number of students tested by NECAP (which is not a true representation of the student population). A student's assignment to a school or district in this report is not contingent on continuous enrollment (as it is in AYP reporting). If less than 10 students are tested then results are not reported. Ethnic group designations have changed over time. Please see website for more information. Data source for report: Disaggregated results teaching year.

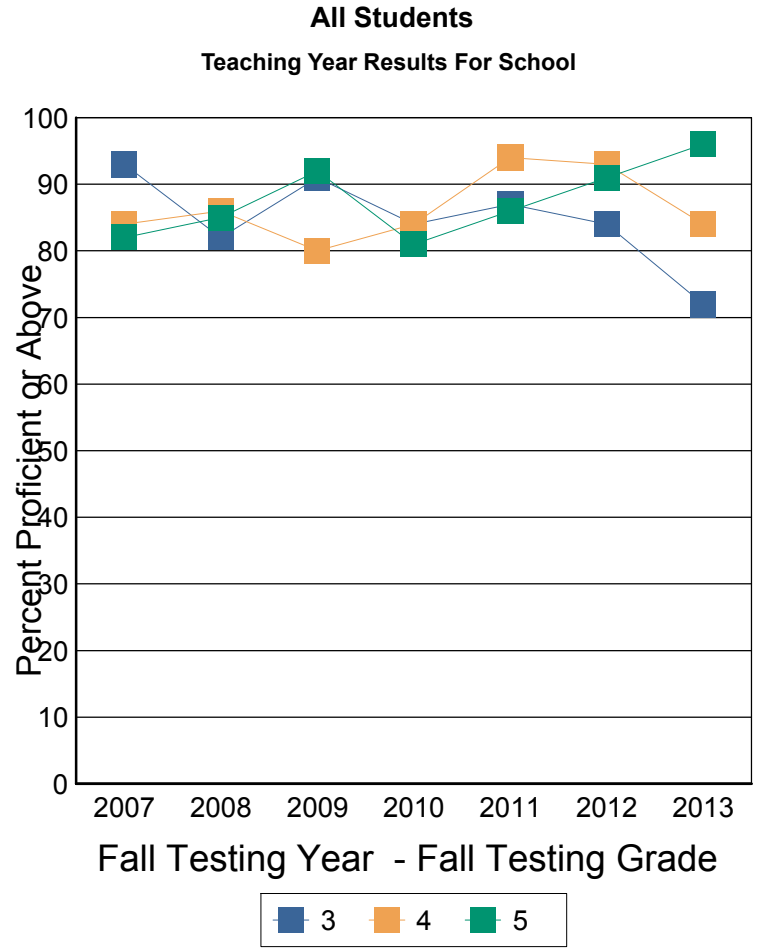
NECAP Percent Proficient or above by Disaggregation and Grade level

Reading Teaching Year Report for School

Mast Way School-22805-Oyster River Coop

Fall NECAP results for students who attended this School during the academic year prior to the year reported. Grade is fall testing grade. Year is fall testing year. Line 1: Percent Proficient or above, Line 2: Avg Scaled Score, Line 3: Number Tested

		2007	2008	2009	2010	2011	2012	2013
3	School	93% 352 82	82% 351 63	91% 352 61	84% 350 65	87% 351 84	84% 351 58	72% 347 74
	District	90% 351 154	84% 351 147	90% 352 131	85% 350 147	90% 352 154	88% 353 139	76% 348 142
	State	77% 347 14,426	78% 348 14,274	80% 349 14,054	80% 348 13,959	81% 349 13,698	78% 348 13,687	77% 348 13,390
4	School	84% 450 67	86% 450 77	80% 450 66	84% 452 68	94% 453 63	93% 451 82	84% 449 57
	District	86% 450 126	87% 449 149	83% 449 154	87% 452 137	91% 452 155	92% 452 153	84% 450 140
	State	74% 446 14,853	75% 447 14,430	75% 447 14,350	77% 449 14,038	79% 448 13,996	78% 448 13,697	75% 447 13,775
5	School	82% 548 78	85% 548 63	92% 552 75	81% 549 64	86% 552 66	91% 553 65	96% 553 78
	District	79% 547 153	85% 548 126	88% 551 150	84% 549 149	89% 551 133	90% 552 159	96% 553 151
	State	71% 546 15,011	76% 547 14,847	79% 548 14,525	78% 548 14,370	77% 548 14,028	77% 548 14,047	79% 548 13,765



These results are for the students who were instructed in the previous teaching year grade. For example: Fall Testing grade 5 is reporting the performance of teaching year grade 4.

Note: This report includes NECAP data only. Students who did not take the test for any reason are NOT included. The denominator for percent proficient is number of students tested by NECAP (which is not a true representation of the student population). A student's assignment to a school or district in this report is not contingent on continuous enrollment (as it is in AYP reporting). If less than 10 students are tested then results are not reported. Ethnic group designations have changed over time. Please see website for more information. Data source for report: Disaggregated results teaching year.

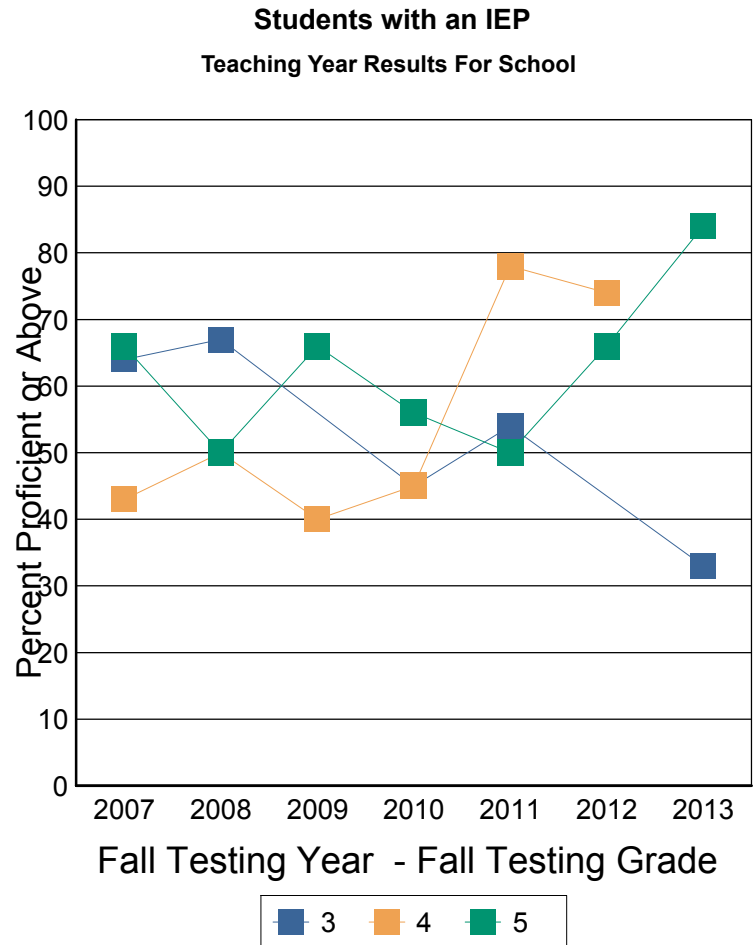
NECAP Percent Proficient or above by Disaggregation and Grade level

Reading Teaching Year Report for School

Mast Way School-22805-Oyster River Coop

Fall NECAP results for students who attended this School during the academic year prior to the year reported. Grade is fall testing grade. Year is fall testing year. Line 1: Percent Proficient or above, Line 2: Avg Scaled Score, Line 3: Number Tested

		2007	2008	2009	2010	2011	2012	2013
3	School	64% 342 11	67% 343 12	3 3	45% 336 11	54% 334 13	7 7	33% 338 12
	District	56% 339 25	52% 341 23	9 9	39% 334 28	60% 338 20	70% 344 20	30% 336 23
	State	37% 334 1,867	40% 335 1,740	42% 336 1,776	41% 336 1,652	41% 336 1,648	41% 336 1,710	36% 335 1,756
4	School	43% 436 14	50% 444 10	40% 440 15	45% 439 11	78% 445 14	74% 447 15	7 7
	District	55% 439 27	56% 441 23	47% 439 32	50% 440 18	68% 443 34	74% 447 23	67% 442 21
	State	33% 433 2,144	35% 434 2,038	36% 435 2,048	38% 436 1,932	38% 436 1,918	37% 436 1,852	32% 435 1,877
5	School	66% 539 12	50% 536 12	66% 545 12	56% 542 18	50% 541 12	66% 546 15	84% 547 13
	District	48% 537 27	46% 537 24	52% 540 25	56% 542 32	44% 539 18	68% 545 35	72% 543 21
	State	31% 535 2,401	33% 535 2,243	39% 537 2,200	39% 536 2,155	34% 536 2,084	38% 537 2,068	37% 537 1,968



These results are for the students who were instructed in the previous teaching year grade. For example: Fall Testing grade 5 is reporting the performance of teaching year grade 4.

Note: This report includes NECAP data only. Students who did not take the test for any reason are NOT included. The denominator for percent proficient is number of students tested by NECAP (which is not a true representation of the student population). A student's assignment to a school or district in this report is not contingent on continuous enrollment (as it is in AYP reporting). If less than 10 students are tested then results are not reported. Ethnic group designations have changed over time. Please see website for more information. Data source for report: Disaggregated results teaching year.

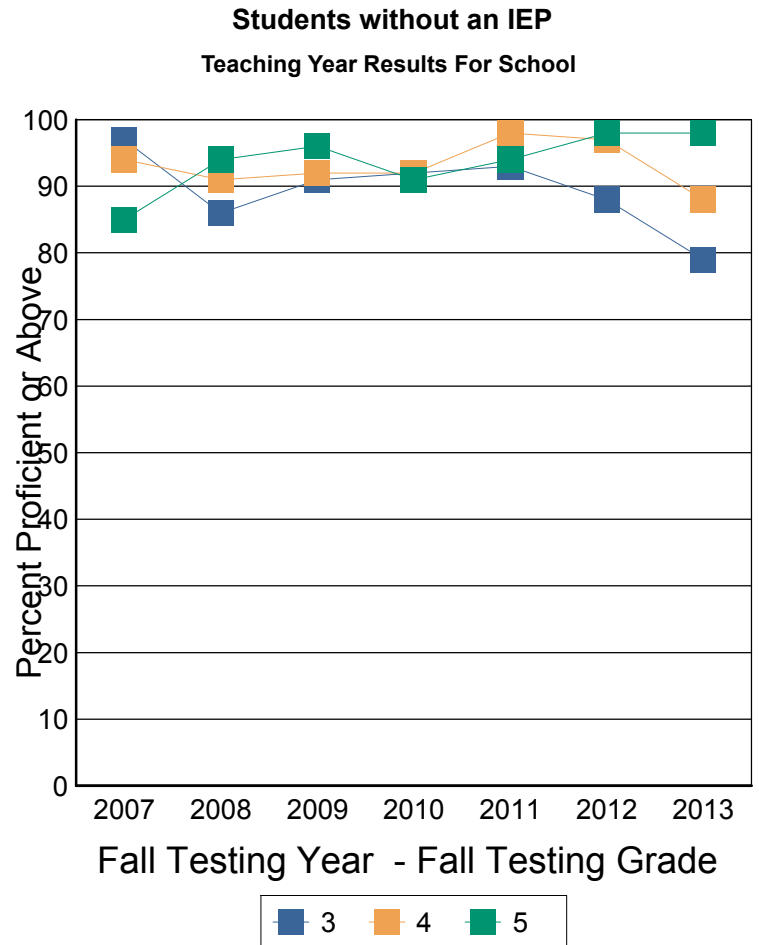
NECAP Percent Proficient or above by Disaggregation and Grade level

Reading Teaching Year Report for School

Mast Way School-22805-Oyster River Coop

Fall NECAP results for students who attended this School during the academic year prior to the year reported. Grade is fall testing grade. Year is fall testing year. Line 1: Percent Proficient or above, Line 2: Avg Scaled Score, Line 3: Number Tested

		2007	2008	2009	2010	2011	2012	2013
3	School	97% 353 71	86% 353 51	91% 353 58	92% 353 54	93% 354 71	88% 353 51	79% 349 62
	District	96% 353 129	89% 353 124	93% 353 122	96% 354 119	94% 355 134	91% 355 119	85% 351 119
	State	82% 348 12,559	83% 350 12,534	87% 350 12,278	85% 349 12,307	87% 350 12,050	83% 350 11,977	82% 350 11,634
4	School	94% 454 53	91% 451 67	92% 453 51	92% 455 57	98% 455 49	97% 452 67	88% 451 50
	District	95% 452 99	93% 451 126	93% 452 122	92% 453 119	96% 455 121	95% 453 130	87% 451 119
	State	81% 448 12,709	82% 449 12,392	82% 449 12,302	83% 451 12,106	85% 450 12,078	84% 450 11,845	82% 449 11,898
5	School	85% 549 66	94% 551 51	96% 553 63	91% 552 46	94% 554 54	98% 555 50	98% 554 65
	District	86% 549 126	95% 551 102	96% 553 125	92% 551 117	96% 553 115	96% 554 124	99% 554 130
	State	79% 548 12,610	83% 549 12,604	86% 550 12,325	85% 550 12,215	84% 550 11,944	85% 550 11,979	85% 550 11,797



These results are for the students who were instructed in the previous teaching year grade. For example: Fall Testing grade 5 is reporting the performance of teaching year grade 4.

Note: This report includes NECAP data only. Students who did not take the test for any reason are NOT included. The denominator for percent proficient is number of students tested by NECAP (which is not a true representation of the student population). A student's assignment to a school or district in this report is not contingent on continuous enrollment (as it is in AYP reporting). If less than 10 students are tested then results are not reported. Ethnic group designations have changed over time. Please see website for more information. Data source for report: Disaggregated results teaching year.

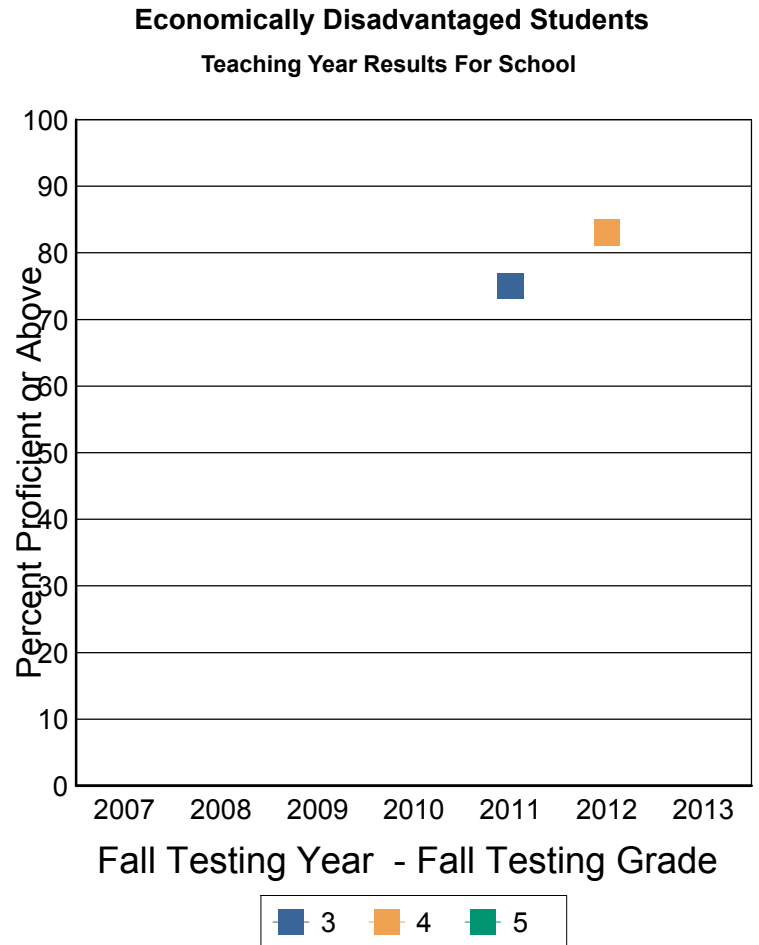
NECAP Percent Proficient or above by Disaggregation and Grade level

Reading Teaching Year Report for School

Mast Way School-22805-Oyster River Coop

Fall NECAP results for students who attended this School during the academic year prior to the year reported. Grade is fall testing grade. Year is fall testing year. Line 1: Percent Proficient or above, Line 2: Avg Scaled Score, Line 3: Number Tested

		2007	2008	2009	2010	2011	2012	2013
3	School	5	5	2	6	75% 350 12	4	9
	District	6	80% 345 10	4	82% 347 11	77% 350 13	8	47% 338 15
	State	59% 341 3,051	62% 342 3,129	68% 343 3,217	64% 343 3,575	68% 344 3,605	63% 343 3,797	60% 343 3,896
4	School	2	5	8	6	6	83% 449 12	4
	District	2	80% 447 10	67% 440 15	7	73% 446 11	83% 449 12	9
	State	55% 440 3,140	58% 441 3,154	59% 441 3,304	64% 444 3,678	64% 443 3,777	62% 443 3,743	59% 442 3,874
5	School	4	3	4	8	5	6	8
	District	6	4	90% 545 10	86% 546 14	6	83% 550 12	9
	State	54% 540 3,013	57% 541 3,183	63% 543 3,284	65% 543 3,713	63% 543 3,754	63% 543 3,873	64% 543 3,741



Fall Testing Year - Fall Testing Grade

These results are for the students who were instructed in the previous teaching year grade. For example: Fall Testing grade 5 is reporting the performance of teaching year grade 4.

Note: This report includes NECAP data only. Students who did not take the test for any reason are NOT included. The denominator for percent proficient is number of students tested by NECAP (which is not a true representation of the student population). A student's assignment to a school or district in this report is not contingent on continuous enrollment (as it is in AYP reporting). If less than 10 students are tested then results are not reported. Ethnic group designations have changed over time. Please see website for more information. Data source for report: Disaggregated results teaching year.

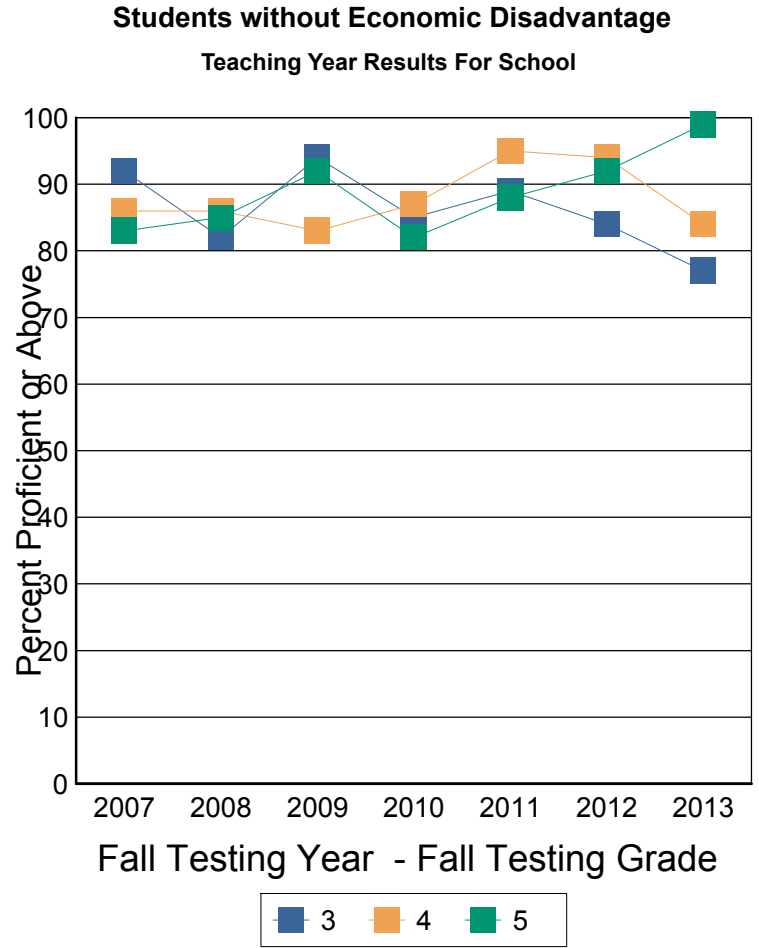
NECAP Percent Proficient or above by Disaggregation and Grade level

Reading Teaching Year Report for School

Mast Way School-22805-Oyster River Coop

Fall NECAP results for students who attended this School during the academic year prior to the year reported. Grade is fall testing grade. Year is fall testing year. Line 1: Percent Proficient or above, Line 2: Avg Scaled Score, Line 3: Number Tested

		2007	2008	2009	2010	2011	2012	2013
3	School	92% 352 77	82% 351 58	94% 353 59	85% 351 59	89% 351 72	84% 350 54	77% 349 65
	District	90% 351 148	84% 352 137	93% 352 127	85% 350 136	91% 353 141	89% 353 131	79% 349 127
	State	81% 348 11,375	83% 350 11,145	84% 350 10,837	85% 350 10,384	86% 351 10,093	84% 350 9,890	83% 350 9,494
4	School	86% 450 65	86% 450 72	83% 451 58	87% 454 62	95% 453 57	94% 452 70	84% 449 53
	District	88% 450 124	88% 450 139	85% 450 139	88% 452 130	91% 453 144	93% 453 141	86% 450 131
	State	79% 448 11,713	79% 448 11,276	81% 448 11,046	82% 450 10,360	85% 450 10,219	84% 450 9,954	81% 449 9,901
5	School	83% 548 74	85% 548 60	92% 552 71	82% 550 56	88% 552 61	92% 553 59	99% 554 70
	District	80% 547 147	84% 549 122	88% 551 140	84% 549 135	89% 551 127	90% 552 147	96% 553 142
	State	75% 547 11,998	80% 548 11,664	83% 549 11,241	83% 549 10,657	82% 549 10,274	83% 550 10,174	84% 550 10,024



These results are for the students who were instructed in the previous teaching year grade. For example: Fall Testing grade 5 is reporting the performance of teaching year grade 4.

Note: This report includes NECAP data only. Students who did not take the test for any reason are NOT included. The denominator for percent proficient is number of students tested by NECAP (which is not a true representation of the student population). A student's assignment to a school or district in this report is not contingent on continuous enrollment (as it is in AYP reporting). If less than 10 students are tested then results are not reported. Ethnic group designations have changed over time. Please see website for more information. Data source for report: Disaggregated results teaching year.

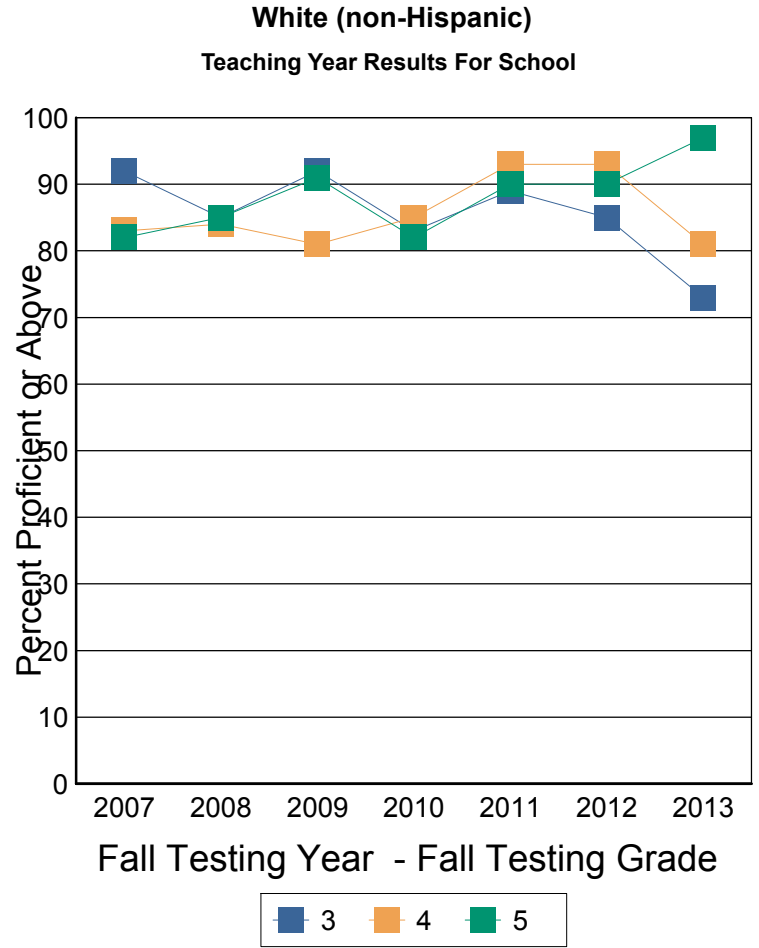
NECAP Percent Proficient or above by Disaggregation and Grade level

Reading Teaching Year Report for School

Mast Way School-22805-Oyster River Coop

Fall NECAP results for students who attended this School during the academic year prior to the year reported. Grade is fall testing grade. Year is fall testing year. Line 1: Percent Proficient or above, Line 2: Avg Scaled Score, Line 3: Number Tested

		2007	2008	2009	2010	2011	2012	2013
3	School	92% 352 75	85% 351 59	92% 353 53	83% 350 60	89% 351 78	85% 351 48	73% 348 69
	District	90% 351 144	84% 351 136	92% 352 117	85% 350 132	91% 352 140	89% 353 118	76% 348 131
	State	77% 347 13,219	79% 348 12,965	82% 349 12,671	81% 348 12,426	82% 349 12,099	79% 349 12,003	78% 349 11,558
4	School	83% 450 57	84% 450 70	81% 450 62	85% 453 62	93% 452 59	93% 452 77	81% 449 46
	District	87% 450 110	86% 450 139	84% 449 144	88% 452 126	89% 452 139	92% 452 140	85% 450 120
	State	75% 446 13,464	76% 447 13,160	77% 447 13,001	78% 449 12,572	80% 448 12,388	80% 448 12,069	77% 447 12,048
5	School	82% 548 73	85% 548 55	91% 552 69	82% 549 60	90% 553 60	90% 553 62	97% 553 73
	District	80% 547 142	86% 549 112	89% 551 141	85% 549 139	90% 552 123	91% 552 145	96% 553 139
	State	72% 546 13,735	76% 547 13,543	79% 548 13,162	80% 548 12,933	78% 548 12,539	79% 548 12,422	80% 549 12,118



These results are for the students who were instructed in the previous teaching year grade. For example: Fall Testing grade 5 is reporting the performance of teaching year grade 4.

Note: This report includes NECAP data only. Students who did not take the test for any reason are NOT included. The denominator for percent proficient is number of students tested by NECAP (which is not a true representation of the student population). A student's assignment to a school or district in this report is not contingent on continuous enrollment (as it is in AYP reporting). If less than 10 students are tested then results are not reported. Ethnic group designations have changed over time. Please see website for more information. Data source for report: Disaggregated results teaching year.

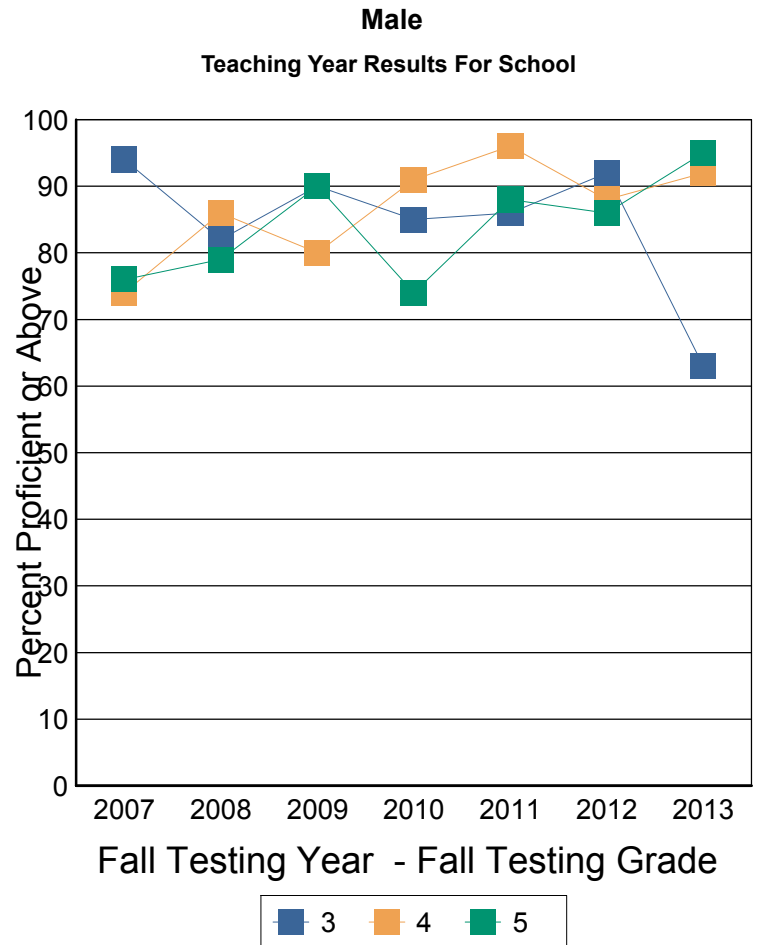
NECAP Percent Proficient or above by Disaggregation and Grade level

Reading Teaching Year Report for School

Mast Way School-22805-Oyster River Coop

Fall NECAP results for students who attended this School during the academic year prior to the year reported. Grade is fall testing grade. Year is fall testing year. Line 1: Percent Proficient or above, Line 2: Avg Scaled Score, Line 3: Number Tested

		2007	2008	2009	2010	2011	2012	2013
3	School	94% 352 45	82% 349 39	90% 352 29	85% 349 26	86% 351 42	92% 349 24	63% 345 43
	District	89% 350 81	81% 348 84	92% 351 60	80% 348 70	91% 352 76	88% 350 59	70% 346 73
	State	73% 345 7,480	76% 347 7,540	78% 347 7,226	76% 346 7,192	78% 347 7,087	75% 347 6,897	74% 347 6,898
4	School	74% 448 42	86% 450 43	80% 448 39	91% 453 34	96% 451 26	88% 451 42	92% 449 26
	District	81% 448 75	85% 448 77	79% 447 87	93% 452 66	88% 450 76	92% 452 76	84% 448 62
	State	70% 444 7,649	71% 445 7,482	72% 445 7,575	74% 447 7,212	74% 446 7,216	74% 447 7,082	71% 445 6,925
5	School	76% 546 43	79% 546 38	90% 551 42	74% 547 39	88% 551 33	86% 551 27	95% 552 38
	District	73% 545 76	84% 548 74	87% 548 77	76% 546 85	90% 549 64	85% 550 75	93% 551 74
	State	66% 544 7,724	71% 545 7,662	73% 546 7,529	75% 546 7,593	72% 546 7,183	74% 546 7,214	73% 546 7,132



These results are for the students who were instructed in the previous teaching year grade. For example: Fall Testing grade 5 is reporting the performance of teaching year grade 4.

Note: This report includes NECAP data only. Students who did not take the test for any reason are NOT included. The denominator for percent proficient is number of students tested by NECAP (which is not a true representation of the student population). A student's assignment to a school or district in this report is not contingent on continuous enrollment (as it is in AYP reporting). If less than 10 students are tested then results are not reported. Ethnic group designations have changed over time. Please see website for more information. Data source for report: Disaggregated results teaching year.

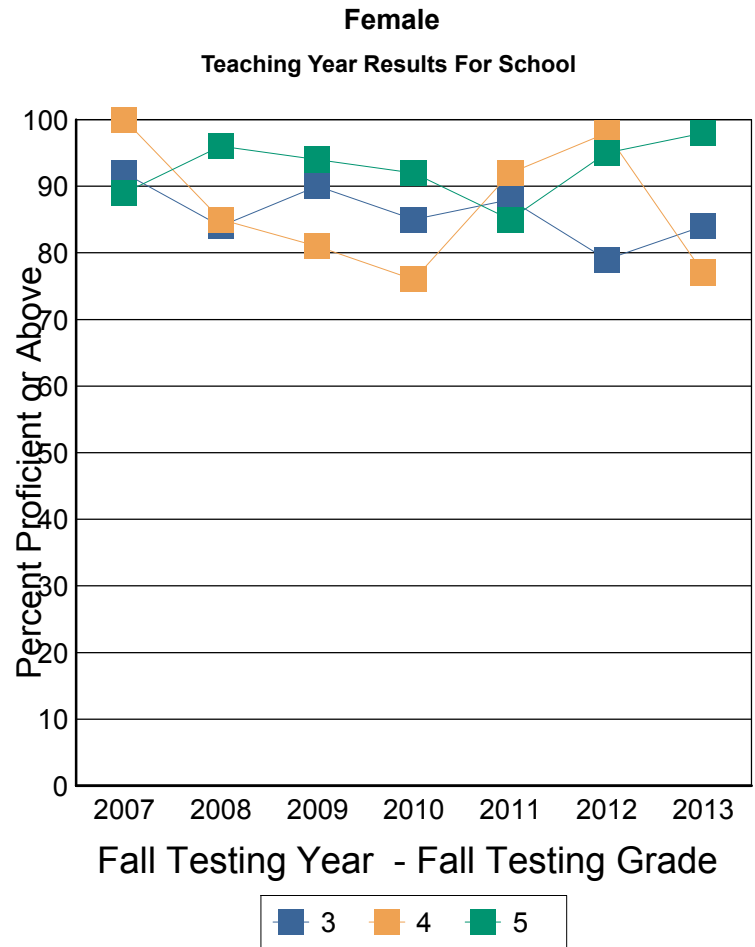
NECAP Percent Proficient or above by Disaggregation and Grade level

Reading Teaching Year Report for School

Mast Way School-22805-Oyster River Coop

Fall NECAP results for students who attended this School during the academic year prior to the year reported. Grade is fall testing grade. Year is fall testing year. Line 1: Percent Proficient or above, Line 2: Avg Scaled Score, Line 3: Number Tested

		2007	2008	2009	2010	2011	2012	2013
3	School	92% 351 37	84% 354 24	90% 352 32	85% 351 39	88% 350 42	79% 352 34	84% 351 31
	District	91% 352 73	87% 355 63	89% 352 71	89% 352 77	89% 353 78	88% 356 80	83% 351 69
	State	81% 348 6,946	80% 349 6,733	84% 350 6,828	83% 350 6,767	84% 351 6,611	81% 350 6,790	79% 350 6,492
4	School	100% 454 25	85% 450 34	81% 452 27	76% 452 34	92% 453 37	98% 452 40	77% 449 31
	District	94% 452 51	89% 451 72	88% 452 67	81% 452 71	92% 454 79	92% 453 77	85% 451 78
	State	78% 448 7,204	80% 449 6,948	80% 448 6,775	81% 450 6,826	83% 450 6,780	81% 449 6,615	79% 449 6,850
5	School	89% 550 35	96% 551 25	94% 553 33	92% 553 25	85% 553 33	95% 555 38	98% 554 40
	District	85% 549 77	86% 550 52	90% 553 73	96% 553 64	87% 553 69	94% 554 84	97% 555 77
	State	77% 548 7,287	79% 548 7,185	84% 550 6,996	82% 550 6,777	81% 550 6,845	81% 550 6,832	85% 551 6,633



These results are for the students who were instructed in the previous teaching year grade. For example: Fall Testing grade 5 is reporting the performance of teaching year grade 4.

Note: This report includes NECAP data only. Students who did not take the test for any reason are NOT included. The denominator for percent proficient is number of students tested by NECAP (which is not a true representation of the student population). A student's assignment to a school or district in this report is not contingent on continuous enrollment (as it is in AYP reporting). If less than 10 students are tested then results are not reported. Ethnic group designations have changed over time. Please see website for more information. Data source for report: Disaggregated results teaching year.

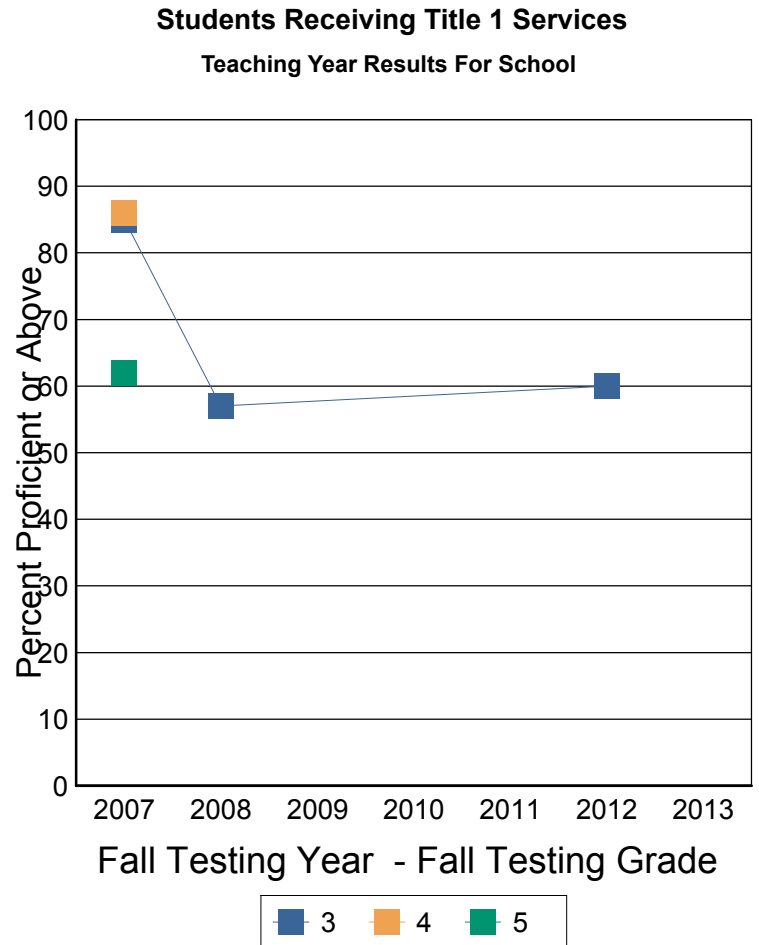
NECAP Percent Proficient or above by Disaggregation and Grade level

Reading Teaching Year Report for School

Mast Way School-22805-Oyster River Coop

Fall NECAP results for students who attended this School during the academic year prior to the year reported. Grade is fall testing grade. Year is fall testing year. Line 1: Percent Proficient or above, Line 2: Avg Scaled Score, Line 3: Number Tested

		2007	2008	2009	2010	2011	2012	2013
3	School	85% 347 20	57% 341 14	5	5	7	60% 338 10	5
	District	85% 347 20	57% 341 14	6	5	7	60% 338 10	5
	State	58% 341 2,960	61% 342 2,959	66% 343 2,842	64% 343 3,090	68% 344 3,048	64% 343 3,331	60% 343 3,336
4	School	86% 447 14	4	4	8	5	9	2
	District	86% 447 14	4	50% 439 12	69% 447 16	64% 445 14	9	2
	State	54% 440 2,721	56% 441 2,628	57% 441 2,654	61% 443 2,822	62% 442 2,917	63% 443 2,954	59% 442 3,084
5	School	62% 543 13	1	0	4	8	2	2
	District	62% 543 13	1	1	42% 539 12	83% 548 12	2	2
	State	49% 540 2,187	56% 541 2,216	59% 542 2,218	64% 543 2,665	61% 543 2,803	63% 544 2,884	64% 544 2,839



These results are for the students who were instructed in the previous teaching year grade. For example: Fall Testing grade 5 is reporting the performance of teaching year grade 4.

Note: This report includes NECAP data only. Students who did not take the test for any reason are NOT included. The denominator for percent proficient is number of students tested by NECAP (which is not a true representation of the student population). A student's assignment to a school or district in this report is not contingent on continuous enrollment (as it is in AYP reporting). If less than 10 students are tested then results are not reported. Ethnic group designations have changed over time. Please see website for more information. Data source for report: Disaggregated results teaching year.

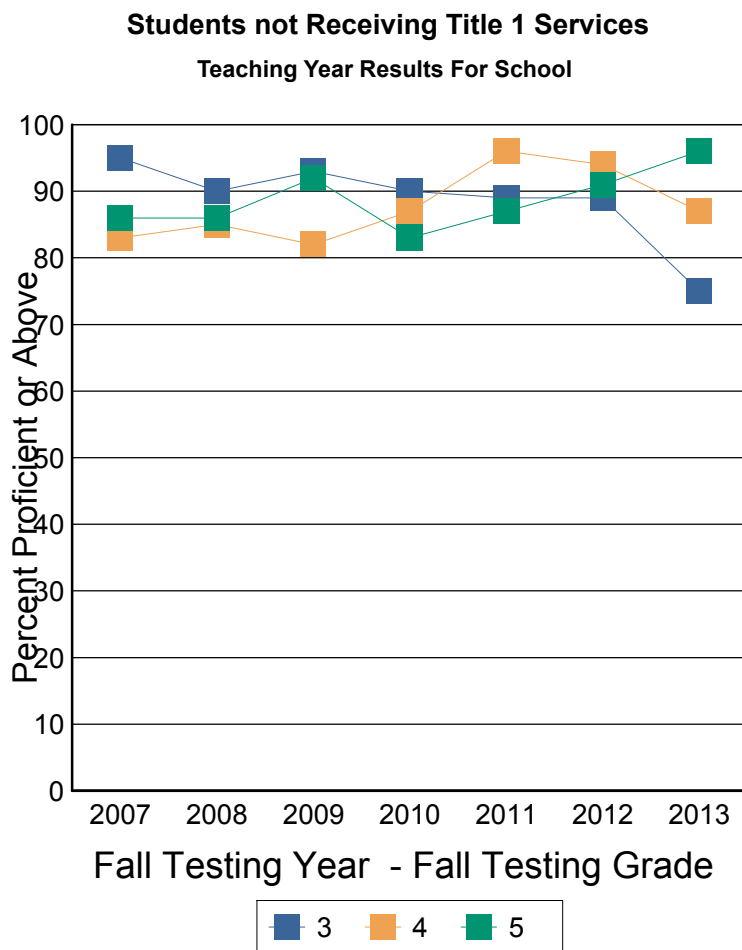
NECAP Percent Proficient or above by Disaggregation and Grade level

Reading Teaching Year Report for School

Mast Way School-22805-Oyster River Coop

Fall NECAP results for students who attended this School during the academic year prior to the year reported. Grade is fall testing grade. Year is fall testing year. Line 1: Percent Proficient or above, Line 2: Avg Scaled Score, Line 3: Number Tested

		2007	2008	2009	2010	2011	2012	2013
3	School	95% 354 62	90% 354 49	93% 353 56	90% 352 60	89% 351 77	89% 354 48	75% 348 69
	District	91% 351 134	87% 352 133	92% 352 125	88% 350 142	92% 353 147	90% 354 129	78% 349 137
	State	81% 348 11,466	83% 350 11,315	84% 350 11,212	84% 349 10,869	84% 350 10,650	83% 350 10,356	82% 350 10,054
4	School	83% 451 53	85% 450 73	82% 450 62	87% 453 60	96% 453 58	94% 452 73	87% 450 55
	District	87% 450 112	87% 450 145	85% 450 142	89% 452 121	93% 453 141	93% 453 144	86% 450 138
	State	79% 447 12,132	79% 448 11,802	80% 448 11,696	81% 450 11,216	83% 449 11,079	82% 449 10,743	79% 448 10,691
5	School	86% 549 65	86% 548 62	92% 552 75	83% 550 60	87% 552 58	91% 553 63	96% 553 76
	District	81% 547 140	85% 549 125	89% 551 149	88% 550 137	89% 552 121	90% 552 157	95% 553 149
	State	75% 547 12,824	78% 548 12,631	82% 549 12,307	81% 549 11,705	81% 549 11,225	82% 549 11,163	82% 549 10,926



These results are for the students who were instructed in the previous teaching year grade. For example: Fall Testing grade 5 is reporting the performance of teaching year grade 4.

Note: This report includes NECAP data only. Students who did not take the test for any reason are NOT included. The denominator for percent proficient is number of students tested by NECAP (which is not a true representation of the student population). A student's assignment to a school or district in this report is not contingent on continuous enrollment (as it is in AYP reporting). If less than 10 students are tested then results are not reported. Ethnic group designations have changed over time. Please see website for more information. Data source for report: Disaggregated results teaching year.