



SAU 90 BACK TO SCHOOL PLAN

August 11, 2020





Hybrid Model:

K-8 Weekly Schedule



Students	Monday	Tuesday	Wednesday	Thursday	Friday
Group A <i>Beginning of the Alphabet</i>	Learning at School	Learning at School	Remote Learning with a focus on SEL (AM) Professional Development and Planning for Staff (PM)	Learning at Home with Remote Support	Learning at Home with Remote Support
Group B <i>End of the Alphabet</i>	Learning at Home with Remote Support	Learning at Home with Remote Support	Remote Learning with a focus on SEL (AM) Professional Development and Planning for Staff (PM)	Learning at School	Learning at School

Learning... A voyage of a lifetime



K-5 Sample: Hybrid Schedule In-School

	Third Grade
8:20 - 9:00	Staggered Arrival
8:45 - 9:00*	Morning Meeting
9:00 - 9:40	Instruction in classroom
9:45- 10:30	Instructional activity outdoors
10:30 - 10:45	15 minute recess
10:45 - 11:30	Instruction in classroom
11:30 - 12:00	Lunch in classroom
12:00 - 12:40	Instruction in classroom
12:45 - 1:25	Recess (one classroom per zone)
1:35 - 2:15	Integrated Arts in Classroom
2:15 - 3:10	Instruction in classroom



K-5 Sample: Hybrid Remote Schedule At Home

Third Grade	
8:30 - 9:00	Morning Meeting
9:00 - 9:30	ASYN math mini-lesson
9:30 - 10:00	SYN math small group
10:00- 10:30	Independent math practice
10:30 - 10:40	Screen Break
10:40 - 11:20	ASYNCH Integrated Arts
11:30 - 11:45	Teacher Check Ins
11:30 - 12:10	Remote Learning Support
11:45- 12:00	Teacher Check Ins
12:00 - 12:15	Independent practice
12:15 - 1:00	Lunch and Recess
12:45 - 1:25	Remote Learning Support
1:00 - 1:20	ASYN ELA mini-lesson
1:20 - 1:40	ELA independent practice
1:40 - 2:00	SYN ELA small group
2:00 - 2:20	Screen Break
2:20 - 3:00	Independent practice
*science and social studies integrated throughout day	



K-5 Sample: Full Remote Schedule

Third Grade	
8:30 - 8:50	Morning Meeting
8:50 - 9:00	Screen Break / Transition
9:00 - 9:40	SYNCH Music
9:40 - 10:00	SYNCH whole class math
10:00 - 10:20	SYNCH math small group
10:20 - 10:40	independent math practice
10:40 - 11:20	SYNCH Library
11:20 - 11:30	Screen Break / Transition
11:30 - 12:15	SYNCH Small group or Independent practice
12:15 - 1:00	Lunch and Recess
1:00 - 1:20	SYNCH whole class ELA
1:20 - 1:40	ELA independent practice
1:40 - 2:00	SYNCH ELA small group
2:00 - 2:10	Screen Break / Transition
2:10 - 3:00	SYNCH Writers Workshop
3:00 - 3:10	Closing Circle
* Science and Social Studies Integrated throughout day	



Middle School Sample: Hybrid Schedule In School



Hampton Academy 2020-2021 Sample In School Schedule - DRAFT

	6th Grade	7th Grade	8th Grade			
7:35	HOMEROOM (7:35-7:50)					
7:40	6 CORE 1 7:50-8:45	7 CORE 1 7:50-8:45	8 INTEGRATED ARTS 1 7:50-8:35			
7:45			8 INTEGRATED ARTS 2 8:35-9:15			
7:50			6 MASK BREAK 8:45-9:00	7 CORE 2 8:45-9:40	8 MASK BREAK 9:15-9:30	
7:55					8 CORE 1 9:30-10:25	
8:00			6 CORE 2 9:00-9:55	7 SNACK 9:40-9:55	8 CORE 2 10:40-11:35	
8:05						7 INTEGRATED ARTS 1 9:55-10:40
8:10						7 INTEGRATED ARTS 2 10:40-11:20
8:15			6 CORE 3 9:55-10:50	7 LUNCH 11:20-11:45	8 CORE 3 11:35-12:30	
8:20						6 LUNCH 10:50-11:15
8:25			6 CORE 4 11:15-12:10	7 CORE 3 11:45-12:40	8 LUNCH 12:30-12:55	
8:30	6 ACADEMIC SUPPORT BLOCK 12:10-12:40					
8:35	7 ACADEMIC SUPPORT BLOCK 12:40-1:10					
8:40	6 SNACK 12:40-12:55	7 MASK BREAK 1:25	8 CORE 4 12:55-1:50			
8:45	6 INTEGRATED ARTS 1 12:55-1:35	7 CORE 4 1:25-2:22				
8:50				8 ACADEMIC SUPPORT BLOCK 1:50-2:22		
8:55	6 INTEGRATED ARTS 2 1:35-2:22					
9:00						
9:05						
9:10						
9:15						
9:20						
9:25						
9:30						
9:35						
9:40						
9:45						
9:50						
9:55						
10:00						
10:05						
10:10						
10:15						
10:20						
10:25						
10:30						
10:35						
10:40						
10:45						
10:50						
10:55						
11:00						
11:05						
11:10						
11:15						
11:20						
11:25						
11:30						
11:35						
11:40						
11:45						
11:50						
11:55						
12:00						
12:05						
12:10						
12:15						
12:20						
12:25						
12:30						
12:35						
12:40						
12:45						
12:50						
12:55						
1:00						
1:05						
1:10						
1:15						
1:20						
1:25						
1:30						
1:35						
1:40						
1:45						
1:50						
1:55						
2:00						
2:05						
2:10						
2:15						
2:20						
2:22						



Middle School Sample: Remote Schedule



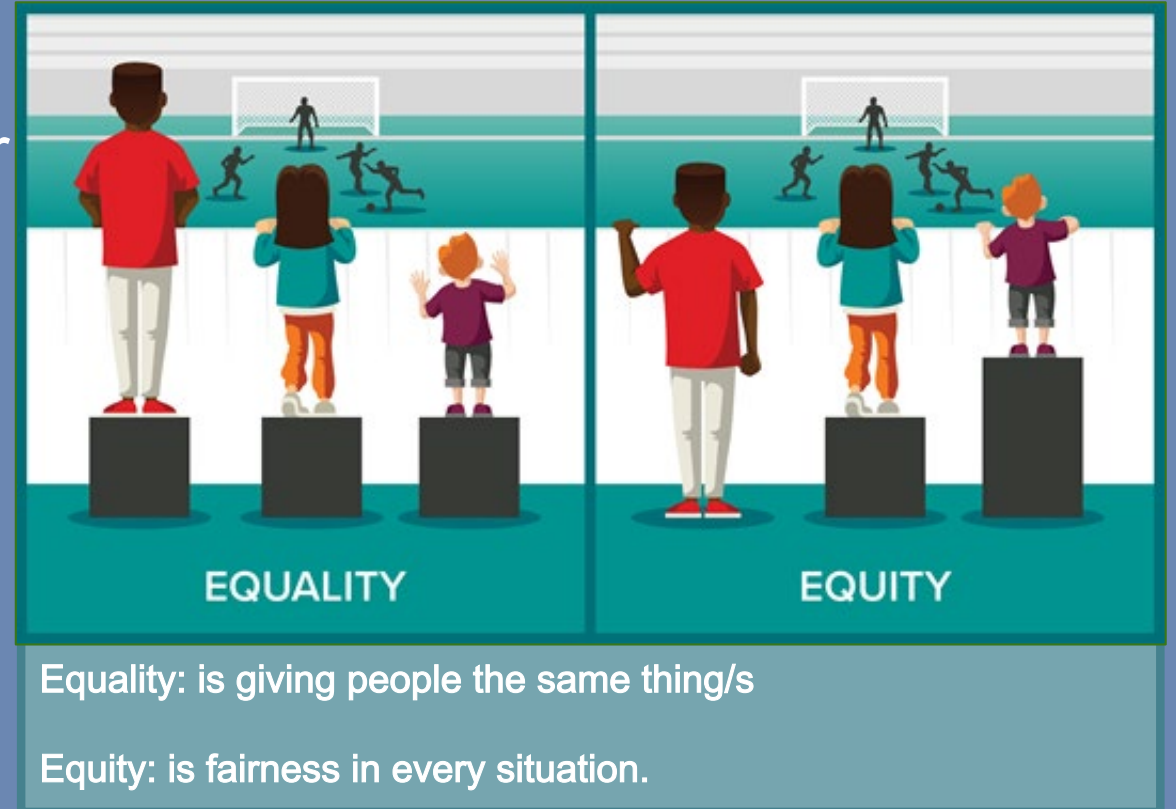
2020-2021 HYBRID MODEL
6TH GRADE SAMPLE STUDENT SCHEDULE – A COHORT

PERIOD	MONDAY IN SCHOOL	TUESDAY IN SCHOOL	WEDNESDAY REMOTE	THURSDAY REMOTE	FRIDAY REMOTE
7:35-7:50	Homeroom	Homeroom	Homeroom	Homeroom	Homeroom
P1 7:50-8:45	LANGUAGE ARTS In Person	LANGUAGE ARTS In Person	7:50-11:00 TO BE SCHEDULED: SEL MENTOR /ADVISORY	LANGUAGE ARTS Live Virtual Check In + Remote Learning Session	LANGUAGE ARTS Live Virtual Check In + Remote Learning Session
BREAK 8:45-9:00	Mask Break	Mask Break	TEAM MEETING	Break	Break
P2 9:00-9:55	SOCIAL STUDIES In Person	SOCIAL STUDIES In Person	STUDY SKILLS/STUDENT SERVICES	SOCIAL STUDIES Live Virtual Check In + Remote Learning Session	SOCIAL STUDIES Live Virtual Check In + Remote Learning Session
P3 9:55-10:50	MATH In Person	MATH In Person	SMALL GROUP CHECK INS AS NEEDED	MATH Live Virtual Check In + Remote Learning Session	MATH Live Virtual Check In + Remote Learning Session
LUNCH 10:50-11:15	LUNCH	LUNCH	VIRTUAL CLUBS (EX. YOGA, GREEN TEAM)	LUNCH	LUNCH
P4 11:15-12:10	SCIENCE In Person	SCIENCE In Person		SCIENCE Live Virtual Check In + Remote Learning Session	SCIENCE Live Virtual Check In + Remote Learning Session
P5 12:10-12:40	ACADEMIC SUPPORT BLOCK In Person	ACADEMIC SUPPORT BLOCK In Person		ACADEMIC SUPPORT BLOCK Live Virtual Check In + Remote Learning Session	ACADEMIC SUPPORT BLOCK Live Virtual Check In + Remote Learning Session
SNACK 12:40- 12:55	Snack	Snack		Snack	Snack
P6 12:55-1:35	ROTATE – In Person ART – TRI 1 WELLNESS – TRI 2 WORLD LANGUAGE – TRI 3	ROTATE – In Person ART – TRI 1 WELLNESS – TRI 2 WORLD LANGUAGE – TRI 3		MUSIC – Full Year Live Virtual Check In + Remote Learning Session	MUSIC – Full Year Live Virtual Check In + Remote Learning Session
P7 1:35-2:20	ROTATE – In Person WELLNESS – TRI 1 WORLD LANGUAGE – TRI 2 COMPUTER – TRI 3	ROTATE – In Person WELLNESS – TRI 1 WORLD LANGUAGE – TRI 2 COMPUTER – TRI 3		ROTATE – WELLNESS - Independent PE Remote Learning Session during TRIs with Wellness -or- WL – Optional Enrichment Activity during TRIs with World Language	Independent Work Session



Student Services:

- PreK
- Experiential Learning Program Gr 6-8
- Specialized Instruction
- Extended Learning
- Related Services
- Team Meetings
- Evaluations
- Contracted Providers
- Specialized Transportation
- Detailed guidance will be provided regarding Governor's Executive Order #18





Facilities:

- Cleaning
- Indoor Air Quality
- Social Distancing/Signage
- Plexiglass
- Outside Users





Technology:

- 1:1 Devices
- Software/Hardware
- Supporting All Students
- Supporting Staff
- Supporting Parents
- COVID-19 Resources





Health Considerations:

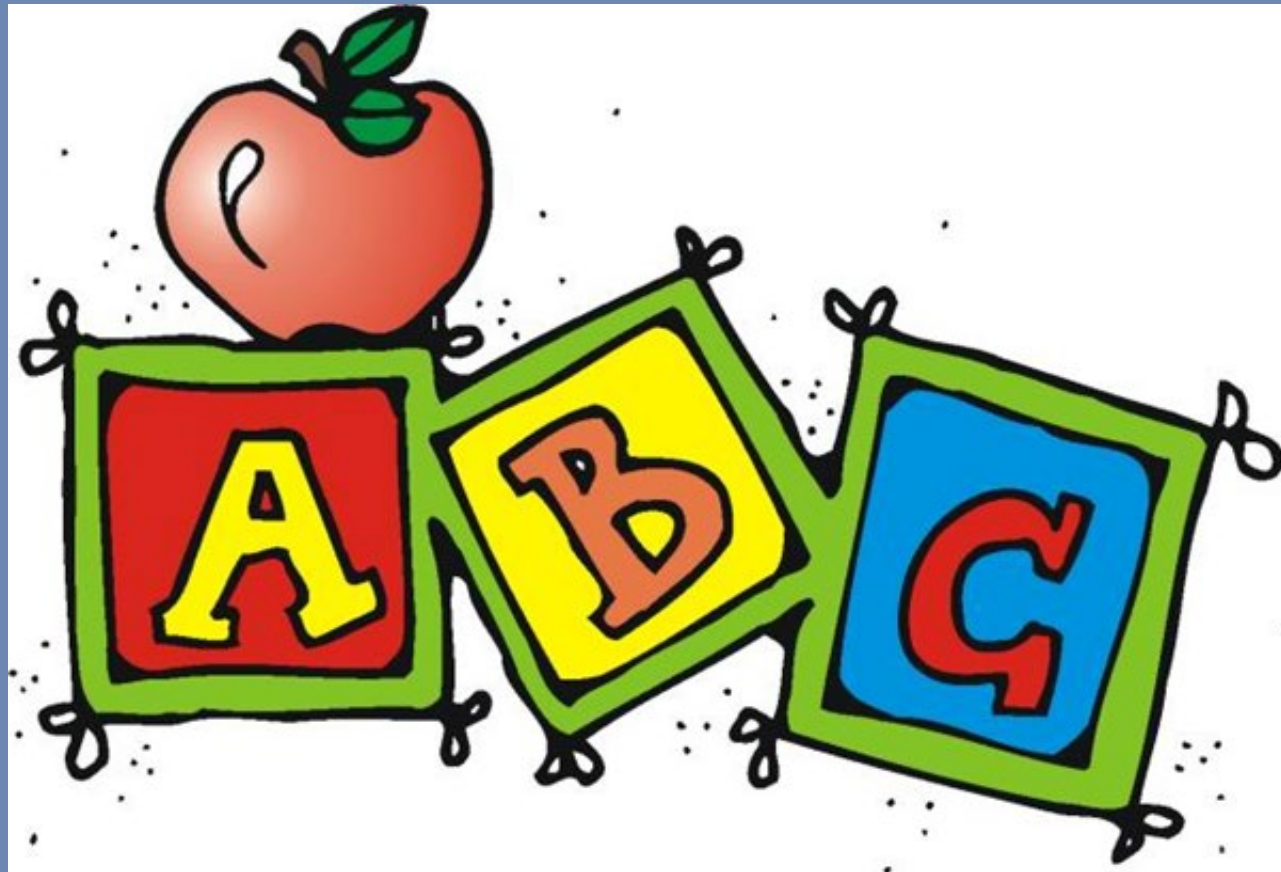
- Daily Screenings
- Face Masks
- Social Distancing
- Hygiene
- Positive Case Response
- Staff Training
- Nursing Staff Needs





Other:

- Busing Updates
- Arrival/Departure Times Increased
- Breakfast/Lunch/Snack
- Limited Visitors





Questions & Comments:

